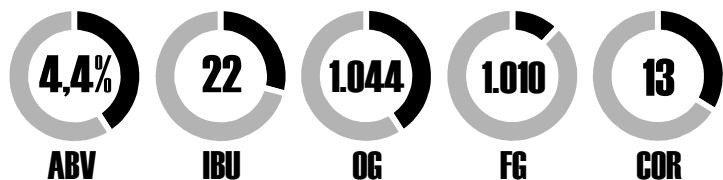


Lucky Red



Irish Red Ale 20L



Ingredientes

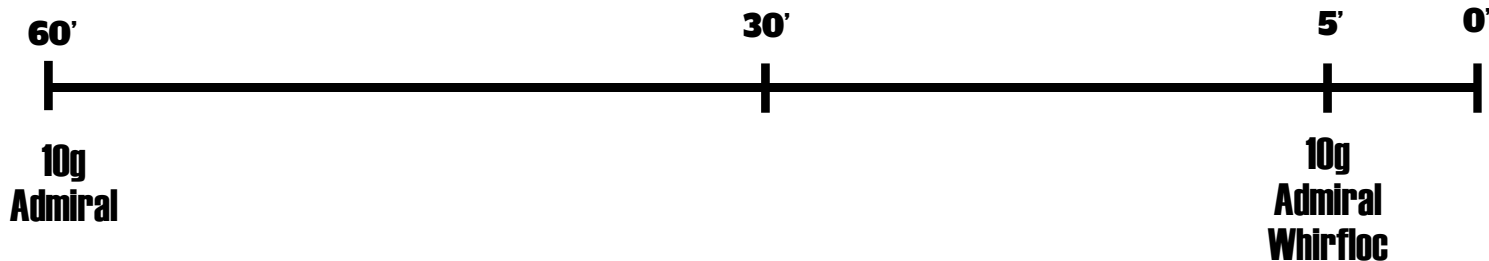
3,0 kg	Malte Pilsen
1,0 kg	Malte Munique Light
300 g	Malte Caramel 150
60 g	Malte Black
20 g	Lúpulo Admiral
1	Pastilha Whirfloc
1	Levedura S-04

Mostura

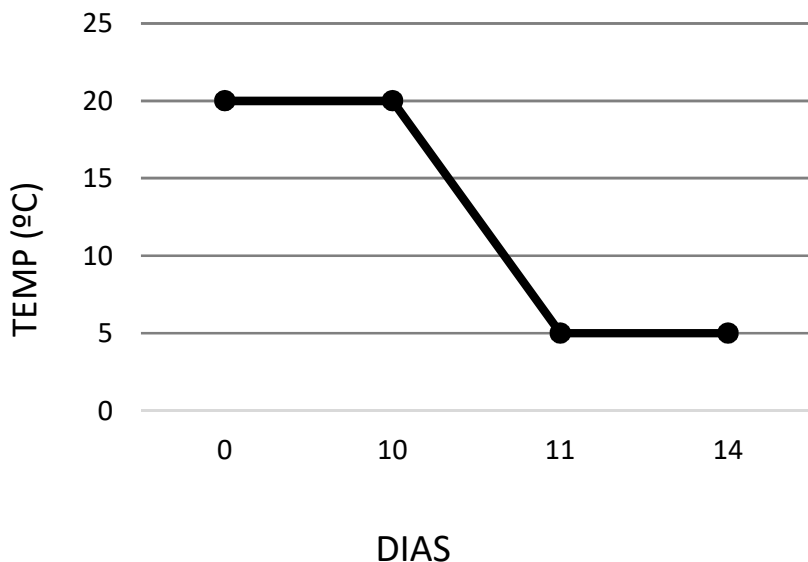
69°C  **60 min**

 **20**  **10**
ÁGUA INICIAL LITROS ÁGUA LAVAGEM LITROS
🌡️ **74°C** 🌡️ **70°C**

Fervura  **60 min**



Fermentação / Maturação



Envase

5g/L

Priming com
5g de açúcar por
litro final de cerveja

10
DIAS

TEMP
AMBIENTE

CERVEJA FÁCIL 