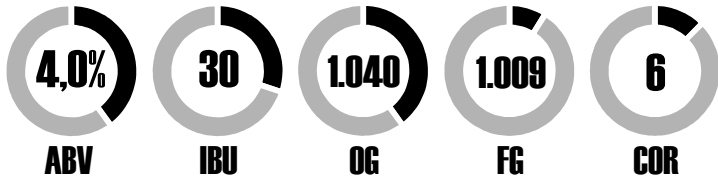


# Gold Rush



# British Golden Ale 20L



## Ingredientes

2,7 kg	Malte Pilsen
1,0 kg	Malte Golden Ale
0,25 kg	Malte CaraMalt
80 g	Malte Crystal 150 L
30 g	Lúpulo Brewer's Gold
30 g	Lúpulo First Gold
1	Whirfloc
1	Levedura S-04

## Mostura

**69°C**  **60 min**

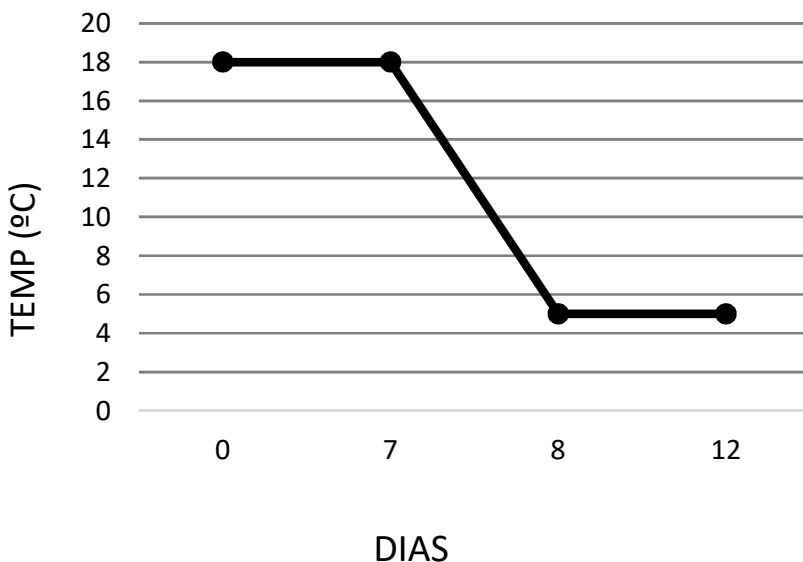
 **20**  **08**  
ÁGUA INICIAL LITROS ÁGUA LAVAGEM LITROS

 **73°C**  **70°C**

**Fervura**  **60 min**



## Fermentação / Maturação



## Envase

**5g/L**

Priming com 5g de açúcar por litro final de cerveja

**10 DIAS**

**TEMP AMBIENTE**

CERVEJA FÁCIL 